

Understanding PO5: Europe closer to citizens



Policy objective 5

Objective? Method? Tool?

PO5 is a cross-cutting **territorial policy objective** to address the diverse and interlinked territorial and local needs and challenges.

PO5 entails a **specific method** for integrated territorial development, that requires place-based and integrated strategies, local empowerment and partnership.

PO5 must be achieved via **territorial tools**: CLLD, ITI, or other territorial tools.

The territorial policy objective

Foster economic, social, and environmental sustainability and resilience in all places.

Urban context:

- to benefit from agglomeration economies and positive spill-overs towards the wider functional urban areas and rural areas close to cities
- to address negative effects of concentration (traffic congestion, pollution, urban sprawl, affordable housing, poverty etc)

Other territories:

- to build on the potentials and specific assets of remote rural areas and local communities (beyond compensatory measures)
- to overcome the negative effects of low density and peripherality (access to jobs and services, pooling resources)

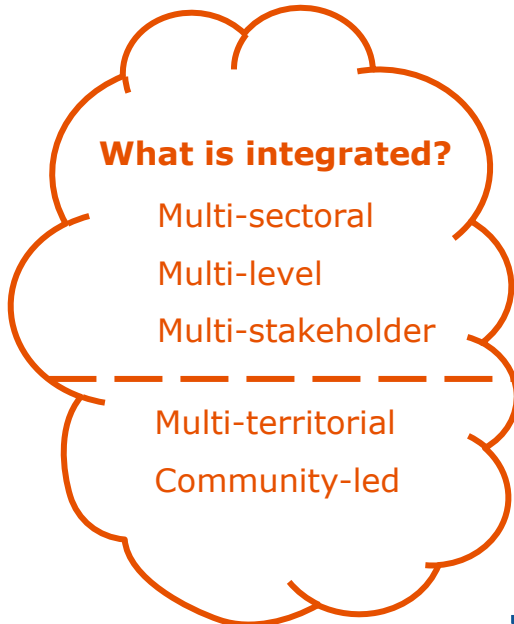
The method

Integrated Territorial Development

Shared management
(Partnership + Multi-level governance)



COHESION POLICY



What is Integrated Territorial Development? (Art. 22)

Territorial tools

- ITI (PO1-5)
- CLLD (PO1-5)
- Other (PO1-5)

Integrated	Place-based
Macroregional strategies	Transnational/cross-border
Partnership Agreement	National
Programmes	Regional/national
Territorial strategies (Art. 23)	Functional (<i>Functional urban area</i>)
Local strategies (Art. 26)	Subregional (<i>Metropolitan region</i>)
	Local admin (<i>City/town/suburb</i>)
	Community (<i>Urb. neighbourhood</i>)

SUD 6%

Minimum requirements for 2021-2027

Key requirements to operationalise Cohesion Policy support to Integrated Territorial Development (CPR Art 23 for all territorial strategies, and Art 25-28 for CLLD local strategies)

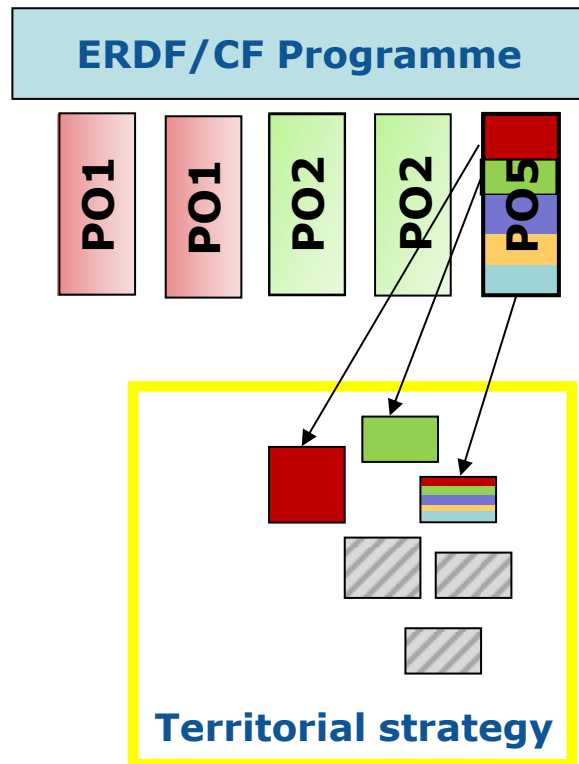
- ❑ **territorial strategies** under the responsibility of relevant territorial authorities or bodies
- ❑ Definition of the **targeted area** according to the analysis of needs, including socio economic and environmental interlinkages
- ❑ **integrated approach** (cross-sectoral, multi-territorial or multi-stakeholder)
- ❑ **Involvement of partners** in preparation and implementation
- ❑ Relevant **territorial authority or body selecting or involved** in project selection

The territorial tools in 2021-2027

Support from the Funds to be provided for integrated territorial and local development in forms of:

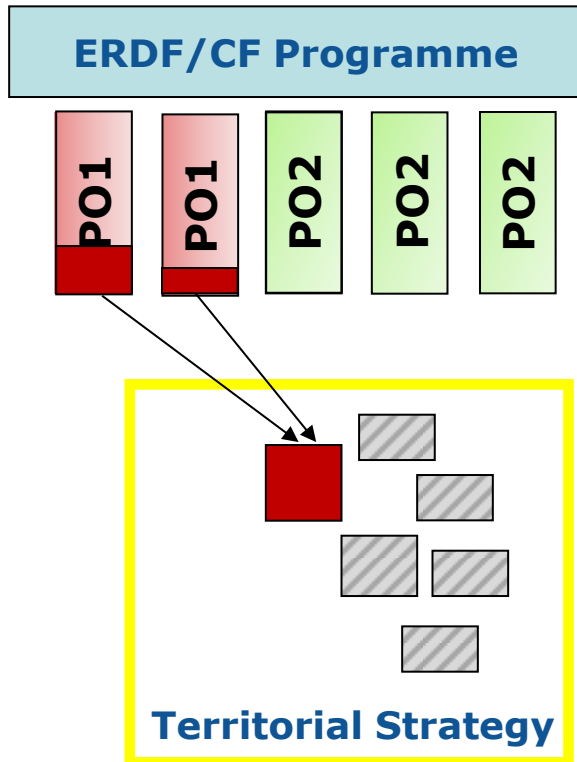
- **ITI:** Necessary when territorial strategy receives funding from multiple priorities or even programmes, funds or POs, (CPR Art 24)
- **CLLD:** Specific delivery method to enhance the participatory approach, (CPR Art 25-28)
- **Other territorial tool:** recognises nationally developed tools for integrated territorial development (CPR Art 22(c))

Support only through P05



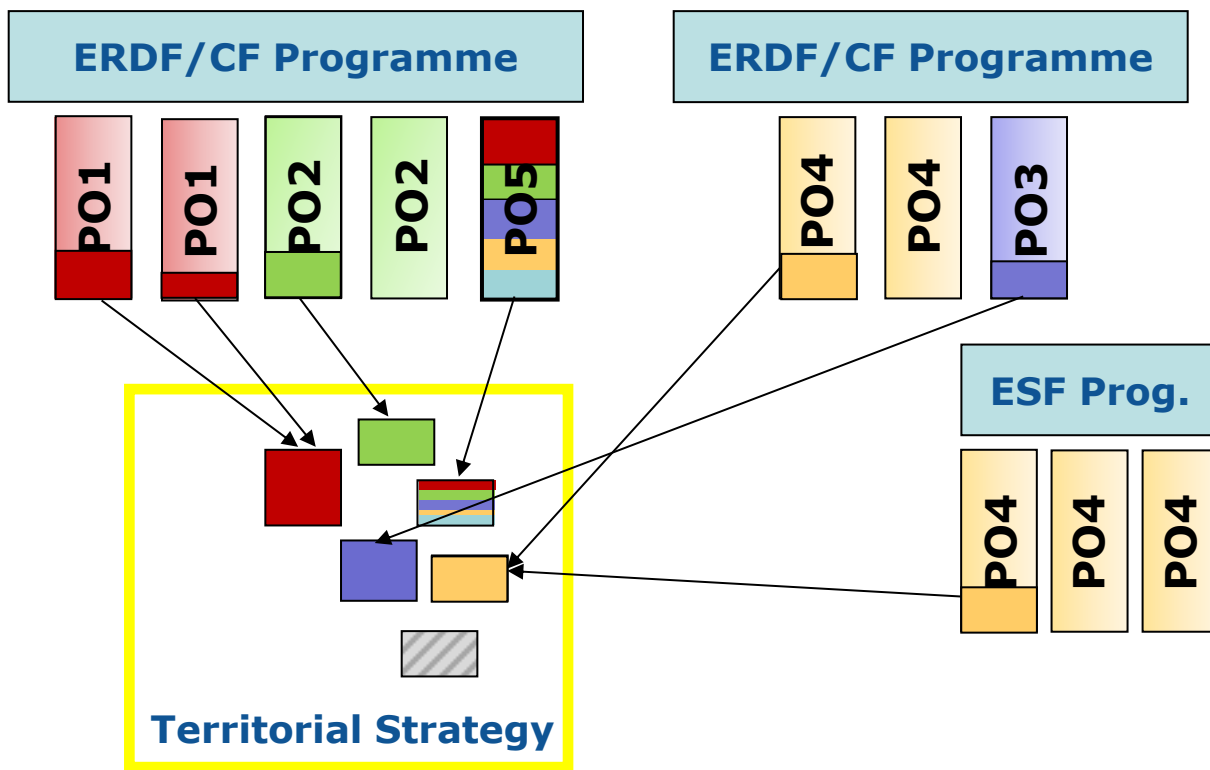
- Provides continuation for the multi-thematic urban and CLLD priority axis and other national tools
- More suitable for experimentation and integrated local projects
- All intervention fields and indicators are available to monitor thematic inputs, outputs and results
- Special attention: Coordination with sectoral policies

Support outside P05



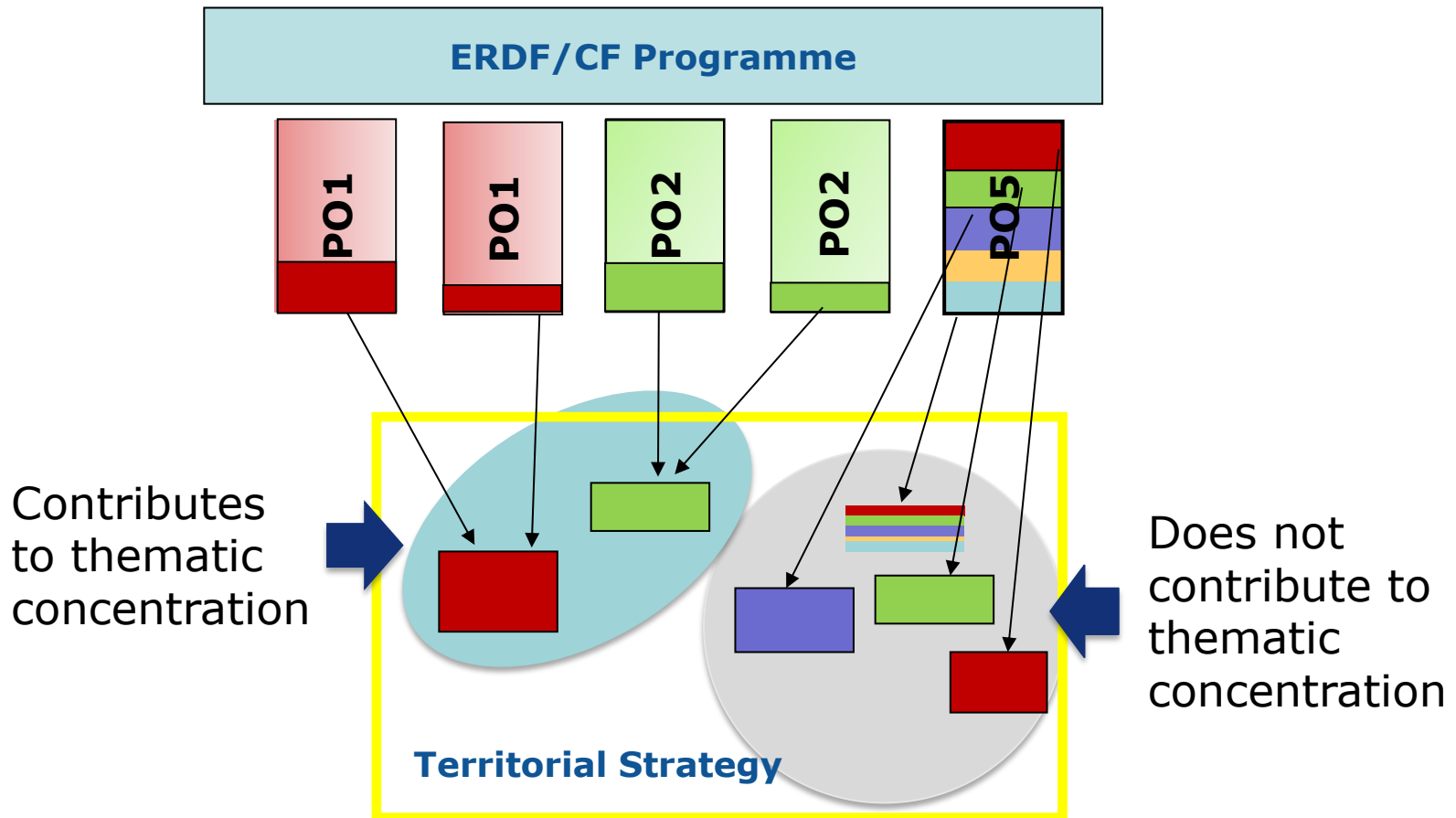
- Concentrate the ERDF support to a limited number of locally relevant themes
- Suitable for a country/region with high thematic concentration and/or small allocation
- At least two priorities for ITI, and the local strategy must be integrated also in this case
- Special attention: integrated approach and the role of local level (minimum requirements) need to be ensured

Support through PO5 and other POs



- A very comprehensive way to provide support to a territorial strategy
- Can be suitable for a territorial strategy with a substantial support from Cohesion Policy
- Suitable to ensure the link with sectoral policies (enabling conditions, TC)
- Can include multiple tools and strategies (e.g. CLLD strategies within ITI strategy)
- Special attention: coordination across the different strands, governance and monitoring need to be adapted

Thematic concentration and P05 programming



Summary of main changes

2014-2020

- Integrated territorial development treated horizontally (SUD, ITI, areas affected by poverty, geographic specificities etc.)
- Different set of rules for strategies depending on the territorial tools (SUD ITI, non-SUD ITI, CLLD, urban priority axis etc.)
- Specific role and obligatory IB status for urban authorities
- Guidance: integrated if strategy has at least two contributing thematic obj.
- ITI tool and multi-thematic priorities to draw funding from multiple thematic objectives

Proposed for 2021-2027

- Integrated territorial development has its own cross-cutting policy objective - Europe closer to citizens (PO5)
- Same basic requirements for all territorial and local strategies, introduced in the regulation (only CLLD requires a different method)
- Specific role without IB status for all tools
- Programmes to define integrated approach for strategies
- No multi-fund and no thematic concentration within PO5 priority
- Territorial tools can be programmed under any POs and funds

Support for PO5: Europe closer to citizens



URBADEV: REGIO-JRC collaboration

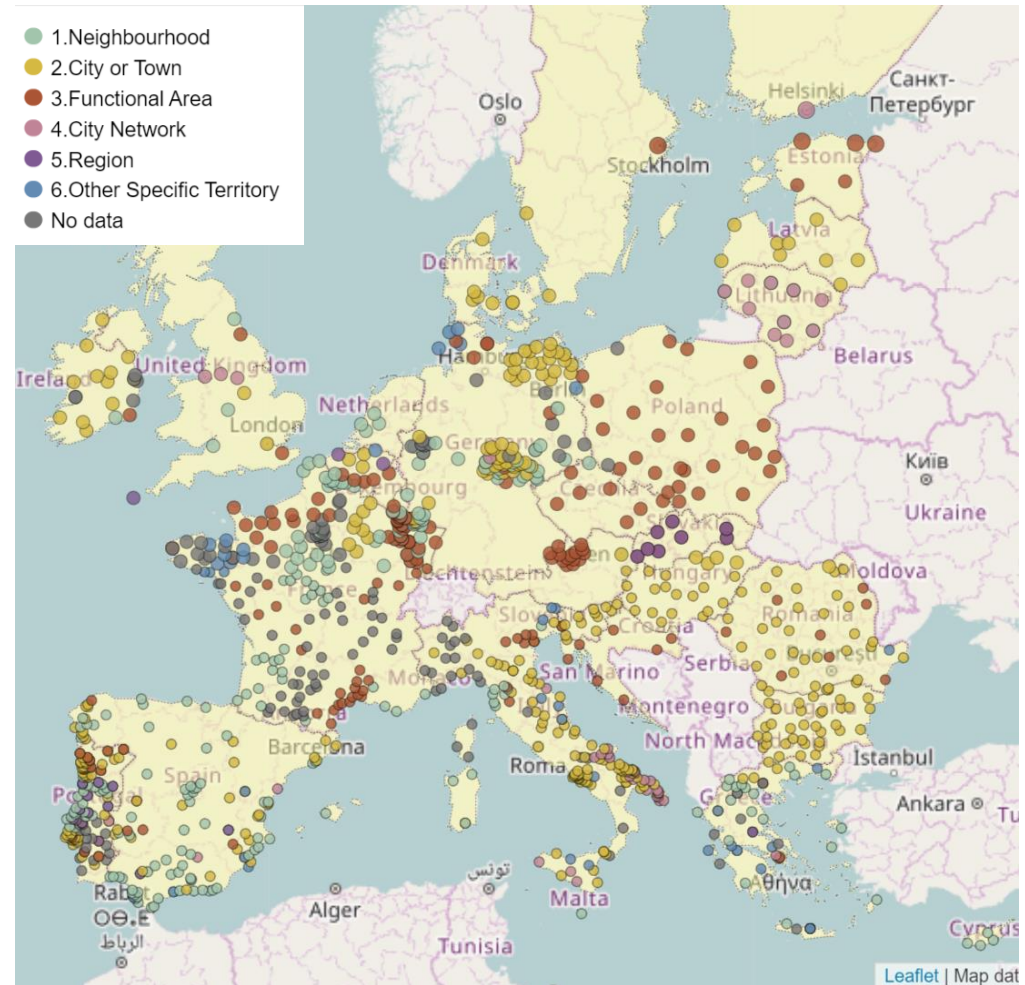
STRAT-Board online mapping tool

1679 integrated strategies, 964 for sustainable urban development (Art. 7)

Strategy and country fact-sheets

Integrated with Urban Data Platform and ESIF Open Data Portal

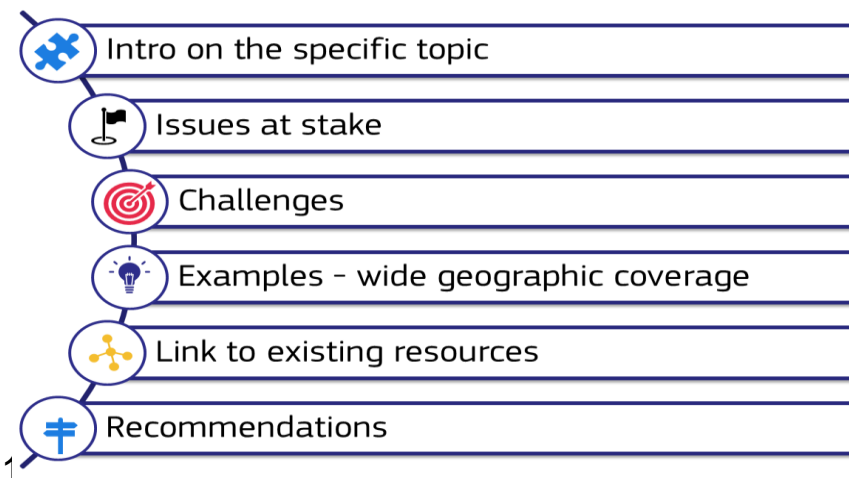
Open data and information source, analytical features



More information:
<https://urban.jrc.ec.europa.eu/strat-board/#/where>

Handbook for Sustainable Urban Development

- A **handbook for policy learning** on the place-based, integrated and strategic approach to urban development in 2014-2020
- **Main targets:** Local Authorities, Managing Authorities
- **6 building blocks:** strategic dimension, territorial focus, governance, cross-sectoral integration, funding and finance, monitoring
- It focuses on **key challenges**, and tackle them through examples, link to online resources, recommendations



Available online:

<https://urban.jrc.ec.europa.eu/#/en/urbanstrategies>

European Urban Initiative (EUI) - legislative proposal

CPR Article 104:

5. **EUR 500 000 000** of the resources for the Investment for jobs and growth goal shall be allocated to the European Urban Initiative under direct or indirect management by the Commission.

ERDF Article 10 European Urban Initiative:

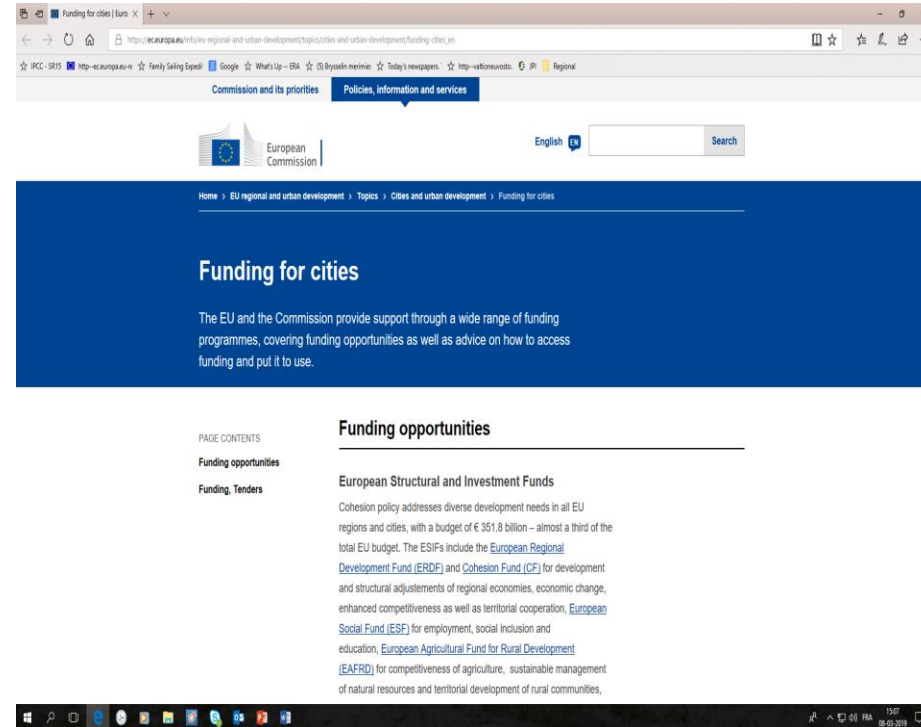
1. The ERDF shall also support the European Urban Initiative,

implemented by the Commission in direct and indirect management. ... This initiative shall cover all urban areas and shall support the Urban Agenda for the EU.



One Stop Shop – Cities Page

- **City-centered information hub** on Europa homepage
- Facilitates users' search for information on **funding, knowledge** and **legislation** in relation to **urban priorities**, e.g. climate change, circular economy, energy transition, transport, poverty etc.
- Now available in all EU languages!



https://ec.europa.eu/info/eu-regional-and-urban-development/topics/cities-and-urban-development/funding-cities_en

FUTURIUM – Urban Agenda

https://ec.europa.eu/regional_policy/sources/docgener/brochure/urban_agenda_en.pdf

<https://ec.europa.eu/futurium/en/urban-agenda>



Cities Forum



CITIES Forum 2020

Together we shape a sustainable urban future

Porto, 30-31 January 2020

#citiesforum2020

Porto.



https://ec.europa.eu/regional_policy/en/conferences/cities_forum_pt



Cooperation, complementarities and synergies

Cohesion family:

- Interreg: potential for functional areas that require cross-border or transnational cooperation (ESPON, URBACT)
- UIA
- ESF+: integrated development in deprived neighbourhoods, social inclusion in local development
- EAFRD, EMFF: integrated strategies in rural and coastal areas, in particular multi-funded Community-led Local Development Strategies
- Technical assistance, TAIEX REGIO PEER 2 PEER, Structural Reform Support Programme

Other EU programmes and initiatives:

- Horizon Europe: development of novel concepts & technologies, including Communities & Cities; missions; European Partnership Initiatives (e.g. JPI Urban Europe), etc.
- InvestEU: market-based support for integrated strategies
- Other programmes, e.g. Life+, Erasmus+, etc.



Thank you for your attention!

REGIO-URBAN-TERRITORIAL@ec.europa.eu



www.ec.europa.eu/info/region



www.facebook.com/EuropeanCommission



www.twitter.com/@EU_Regional



www.linkedin.com/company/1809



DG REGIO collaborative platform
www.yammer.com/regionetwork



plus.google.com/+EuropeanCommission



www.flickr.com/euregional



Sign up for our 'REGIOFLASH'
www.inforegiodoc.eu